


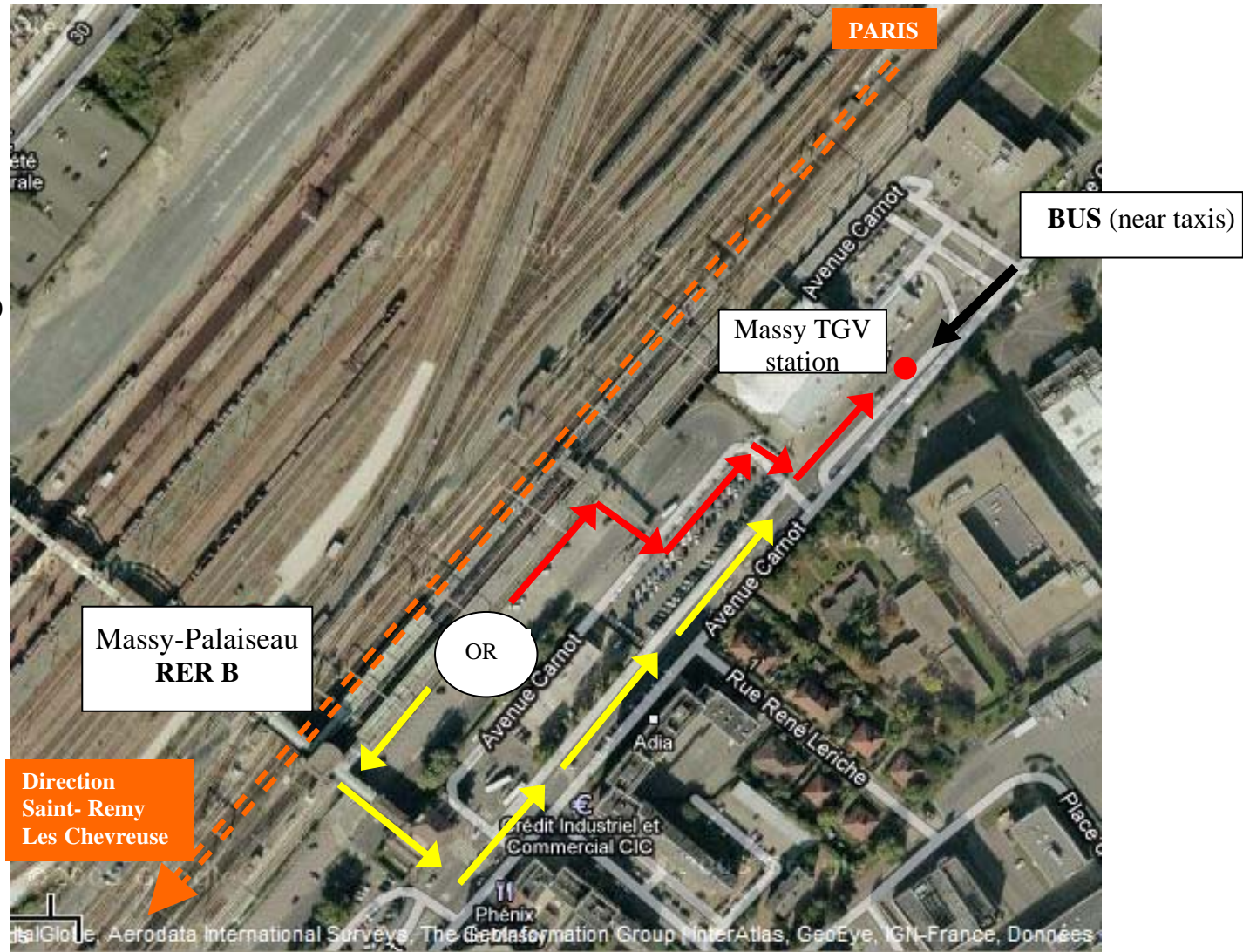


**A bus will wait for you on the 24th June, 2010, at 09:30 AM (sharp) to go to SOLEIL  
see the map below:**

In order to go to SOLEIL on Thursday 24th June, from Paris, you can take the RER B direction Saint-Remy Les Chevreuses and stop at Massy-Palaiseau RER station. At Massy, a bus has been especially booked for the workshop in order to go SOLEIL. It will be parked near taxis station (see the map)

-  : one way
-  : an other way
-  : place where the bus wait at 09:30 AM



Map of Massy-Palaiseau Station

